

PCWA Facilities and Features

- Dam
- Ancillary and Other Facilities
- Powerhouse
- Gage
- Penstock
- Tunnel
- Pipeline
- Access Point
- FERC Boundary

Project Power and Communication Lines:

- Communication
- Power
- Power (underground)
- Communication/Power
- Communication/Power (underground)

Transportation

- Non-Project General Access Road
- Project Road
- Project Trail
- Recreation Access Road
- Recreation Water Supply Facility Access Road or Trail
- Other Road

Project Recreation Facilities

- Picnic Area
- Boat Ramp
- Scenic Viewpoint
- Developed Campground
- Water Supply Line
- Dispersed Concentrated Use Area

Other Facilities

PG & E Transmission Lines:

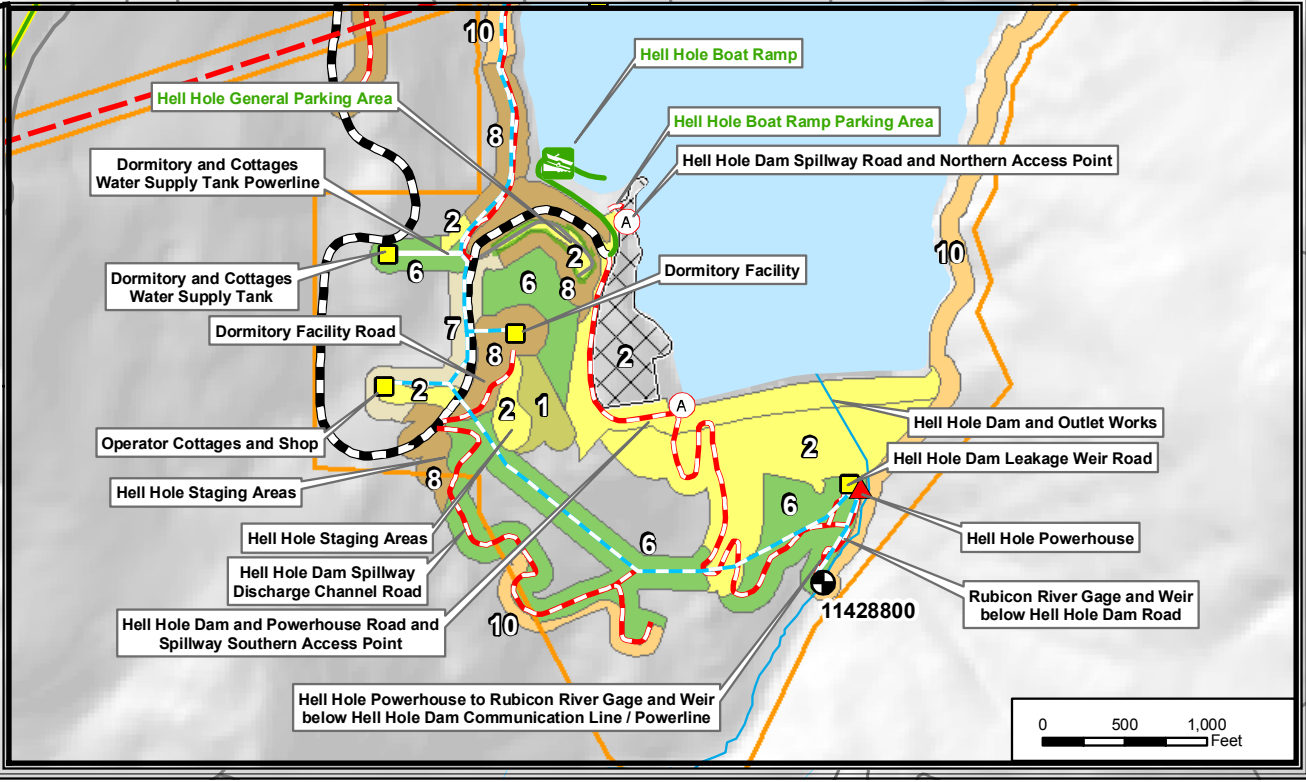
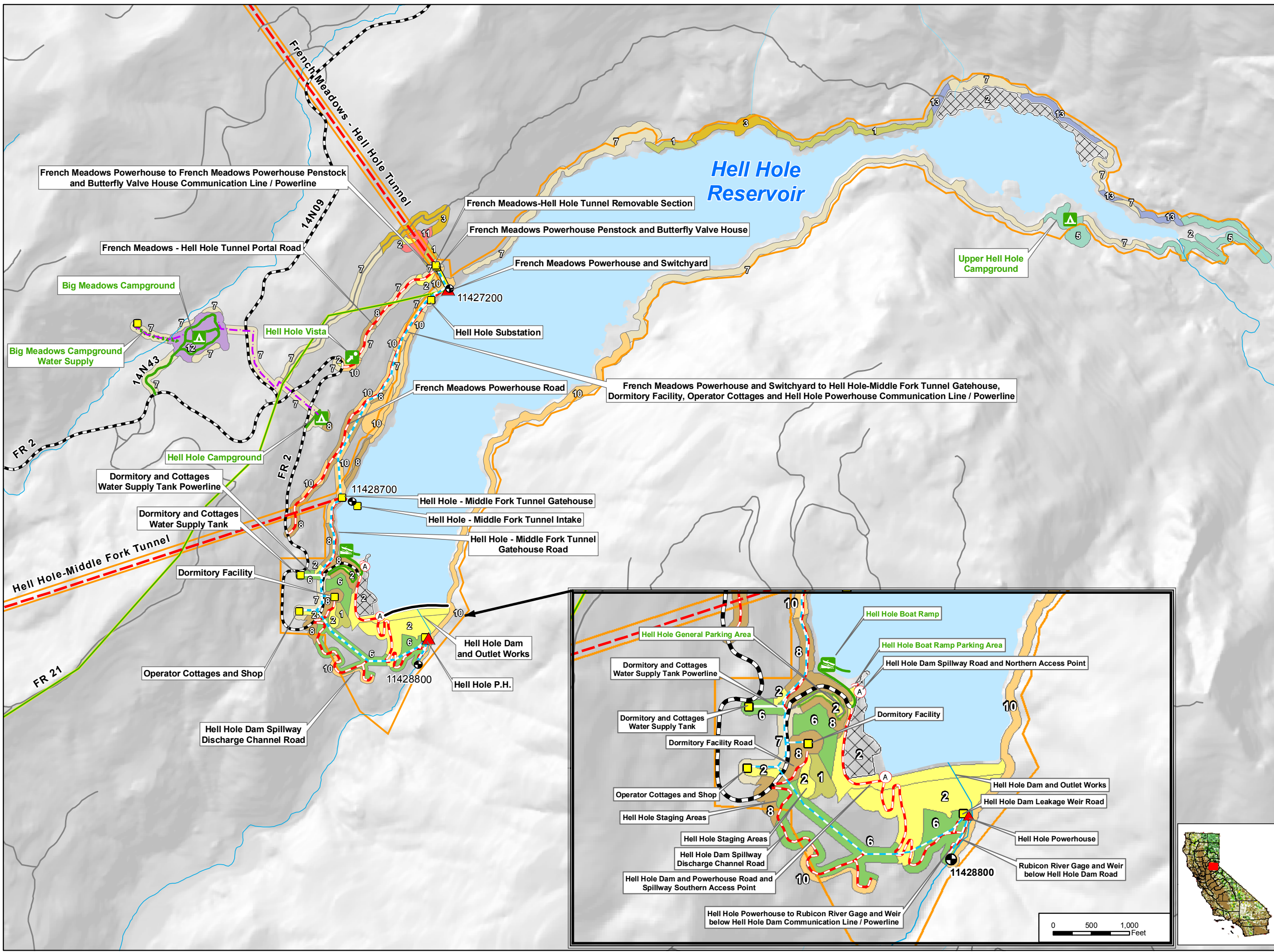
- 230 kV
- 60 kV

Fuel Model IDs

1	7
2	8
3	10
4	11
5	12
6	13

PCWA
Placer County Water Agency
Middle Fork American River Project
Map LAND 2-1
Fuel Evaluation at Project Facilities,
Project Recreation Facilities, and
Dispersed Concentrated Use Areas
Duncan Creek, French Meadows Area

0 0.25 0.5 Miles
Projection: Ca. Stateplane, Zone 2
Datum: NAD 83
Date: 03/26/09



PCWA Facilities and Features

- Dam
- Ancillary and Other Facilities
- Powerhouse
- Gage
- Penstock
- Tunnel
- Pipeline
- Access Point
- FERC Boundary

Project Power and Communication Lines:

- Communication
- Power
- Power (underground)
- Communication/Power
- Communication/Power (underground)

Transportation

- Non-Project General Access Road
- Project Road
- Project Trail
- Recreation Access Road
- Recreation Water Supply Facility Access Road or Trail
- Other Road

Project Recreation Facilities

- Picnic Area
- Boat Ramp
- Scenic Viewpoint
- Developed Campground
- Water Supply Line
- Dispersed Concentrated Use Area

Other Facilities

PG & E Transmission Lines:

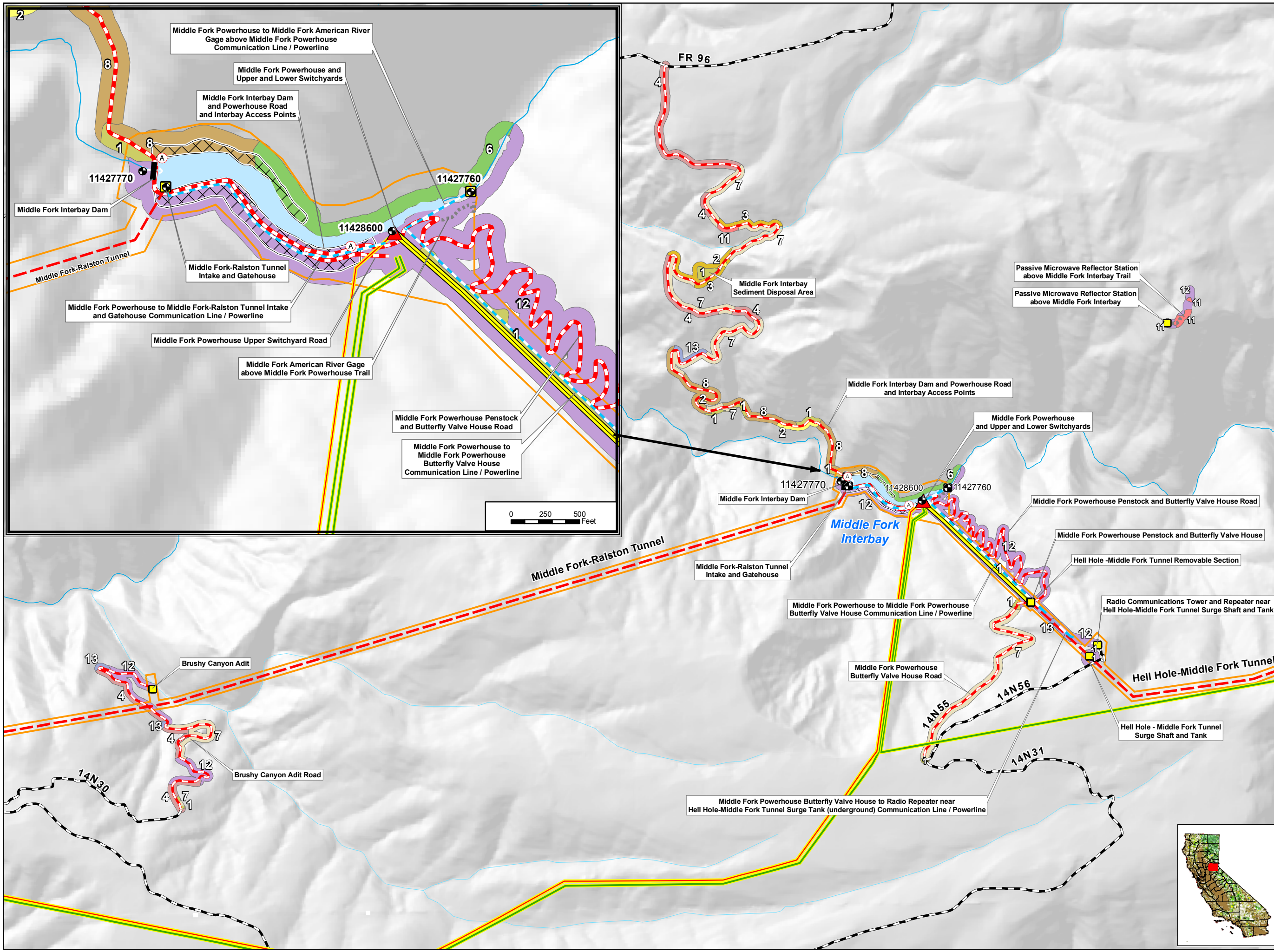
- 230 kV
- 60 kV

Fuel Model IDs

1	7
2	8
3	10
4	11
5	12
6	13

PCWA
Placer County Water Agency
Middle Fork American River Project
Map LAND 2-1
Fuel Evaluation at Project Facilities,
Project Recreation Facilities, and
Dispersed Concentrated Use Areas
Hell Hole Area

0 0.25 0.5 Miles
0 500 1,000 Feet
Projection: Ca. Stateplane, Zone 2
Datum: NAD 83
Date: 03/26/09



PCWA Facilities and Features

- Dam
- Ancillary and Other Facilities
- Powerhouse
- Gage
- Penstock
- Tunnel
- Pipeline
- Access Point
- FERC Boundary

Project Power and Communication Lines:

- Communication
- Power
- Power (underground)
- Communication/Power
- Communication/Power (underground)

Transportation

- Non-Project General Access Road
- Project Road
- Project Trail
- Recreation Access Road
- Recreation Water Supply Facility Access Road or Trail
- Other Road

Project Recreation Facilities

- Picnic Area
- Boat Ramp
- Scenic Viewpoint
- Developed Campground
- Water Supply Line
- Dispersed Concentrated Use Area

Other Facilities

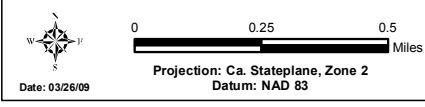
- PG & E Transmission Lines:**
- 230 kV
 - 60 kV

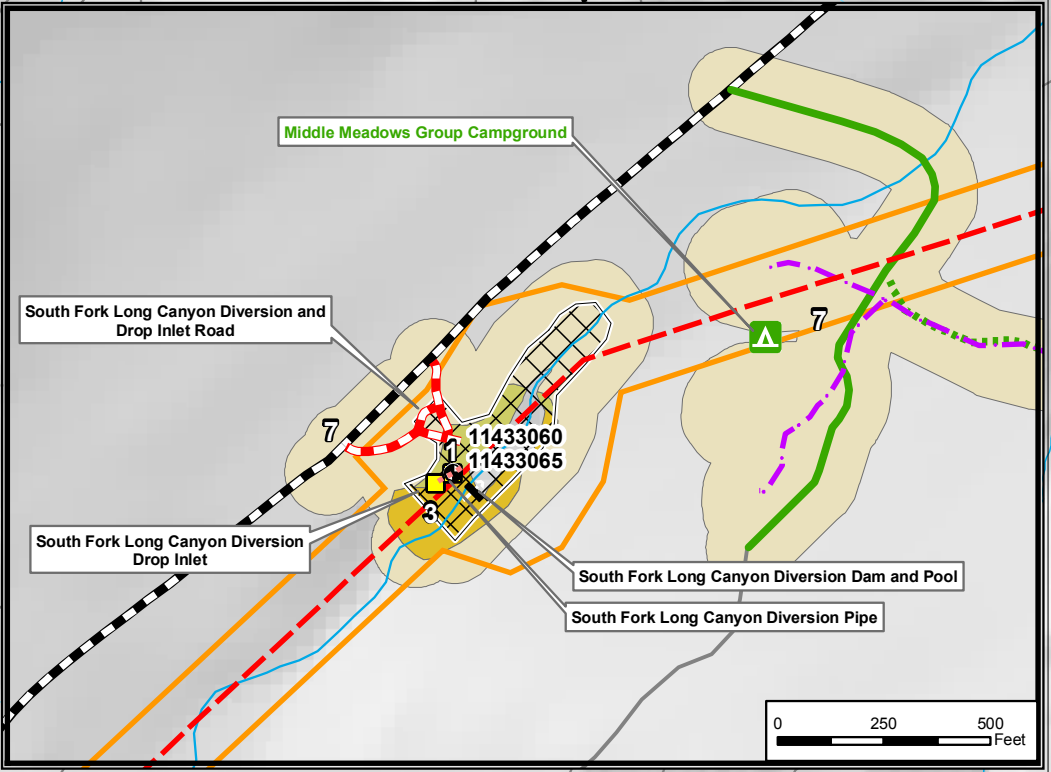
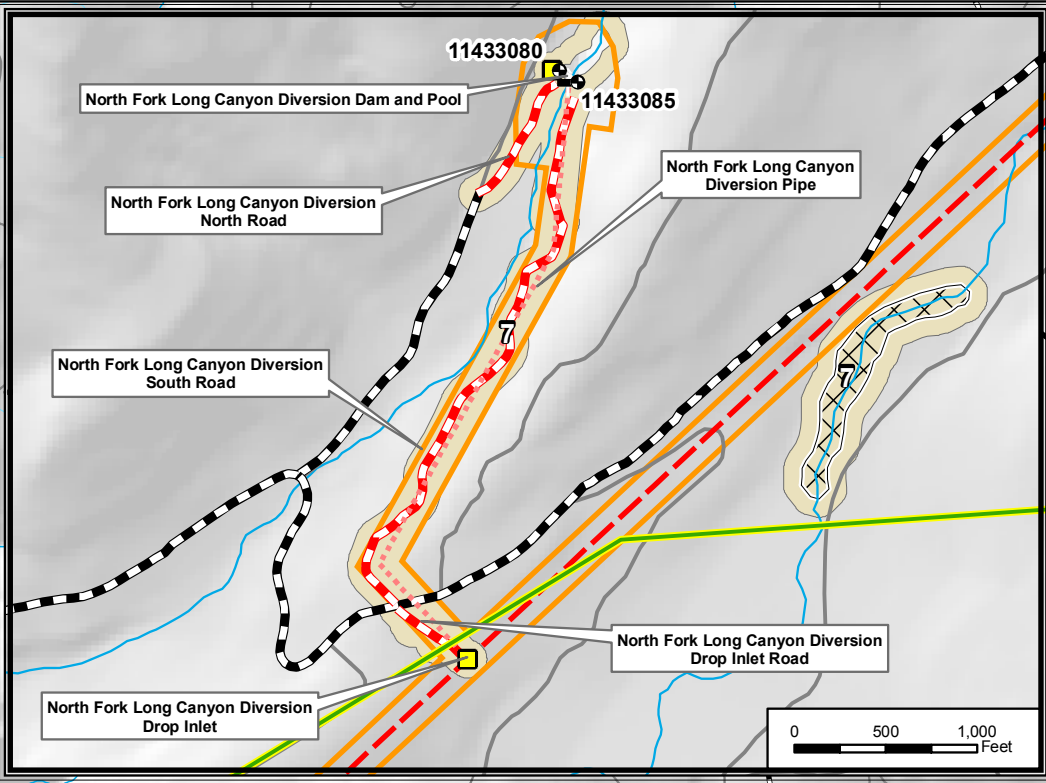
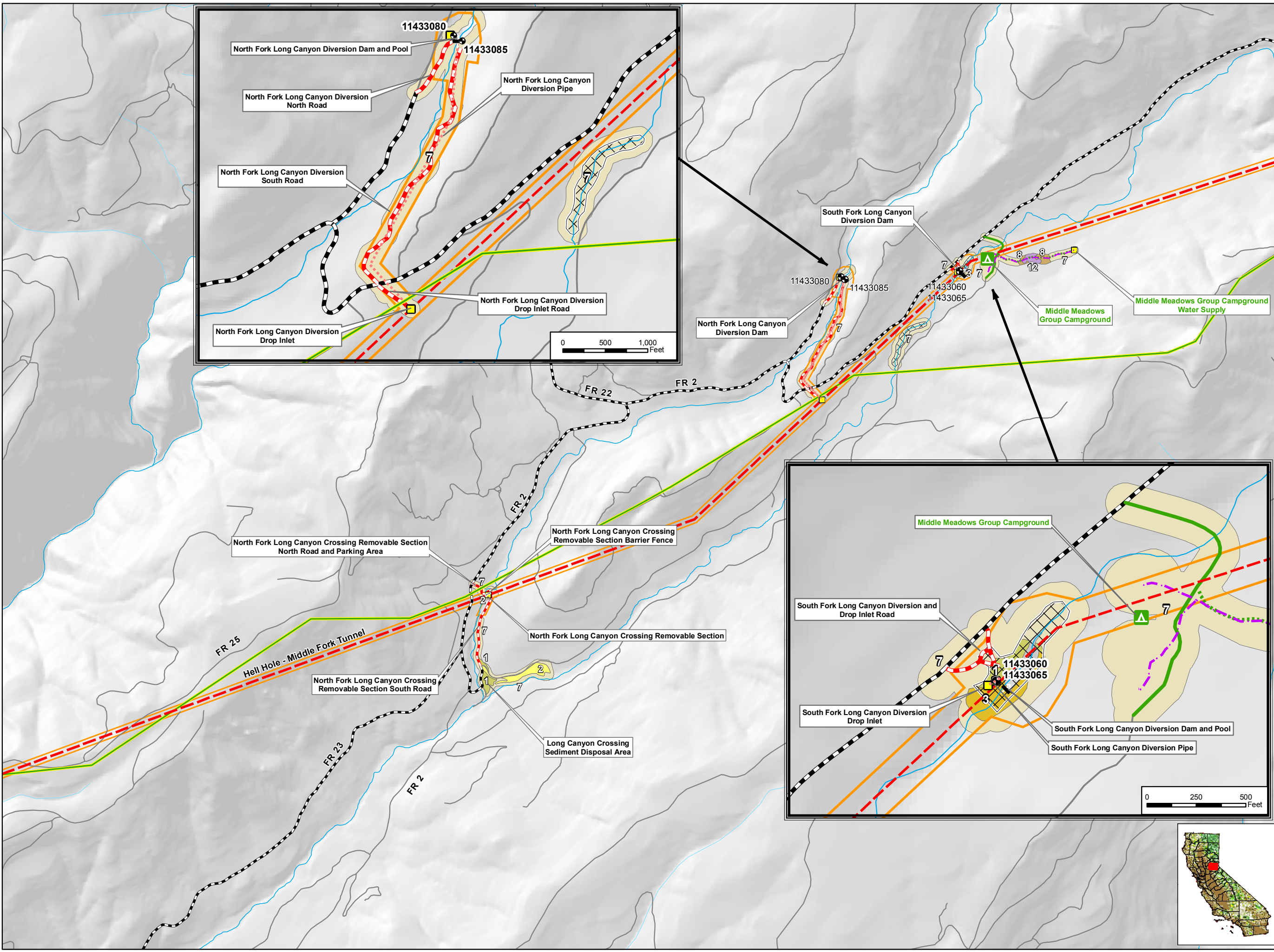
Fuel Model IDs

- | | | | |
|--|---|--|----|
| | 1 | | 7 |
| | 2 | | 8 |
| | 3 | | 10 |
| | 4 | | 11 |
| | 5 | | 12 |
| | 6 | | 13 |



Placer County Water Agency
 Middle Fork American River Project
Map LAND 2-1
**Fuel Evaluation at Project Facilities,
 Project Recreation Facilities, and
 Dispersed Concentrated Use Areas**
 Interbay Area





PCWA Facilities and Features

- Dam
- Ancillary and Other Facilities
- Powerhouse
- Gage
- Penstock
- Tunnel
- Pipeline
- Access Point
- FERC Boundary

Project Power and Communication Lines:

- Communication
- Power
- Power (underground)
- Communication/Power
- Communication/Power (underground)

Transportation

- Non-Project General Access Road
- Project Road
- Project Trail
- Recreation Access Road
- Recreation Water Supply Facility Access Road or Trail
- Other Road

Project Recreation Facilities

- Picnic Area
- Boat Ramp
- Scenic Viewpoint
- Developed Campground
- Water Supply Line
- Dispersed Concentrated Use Area

Other Facilities

PG & E Transmission Lines:

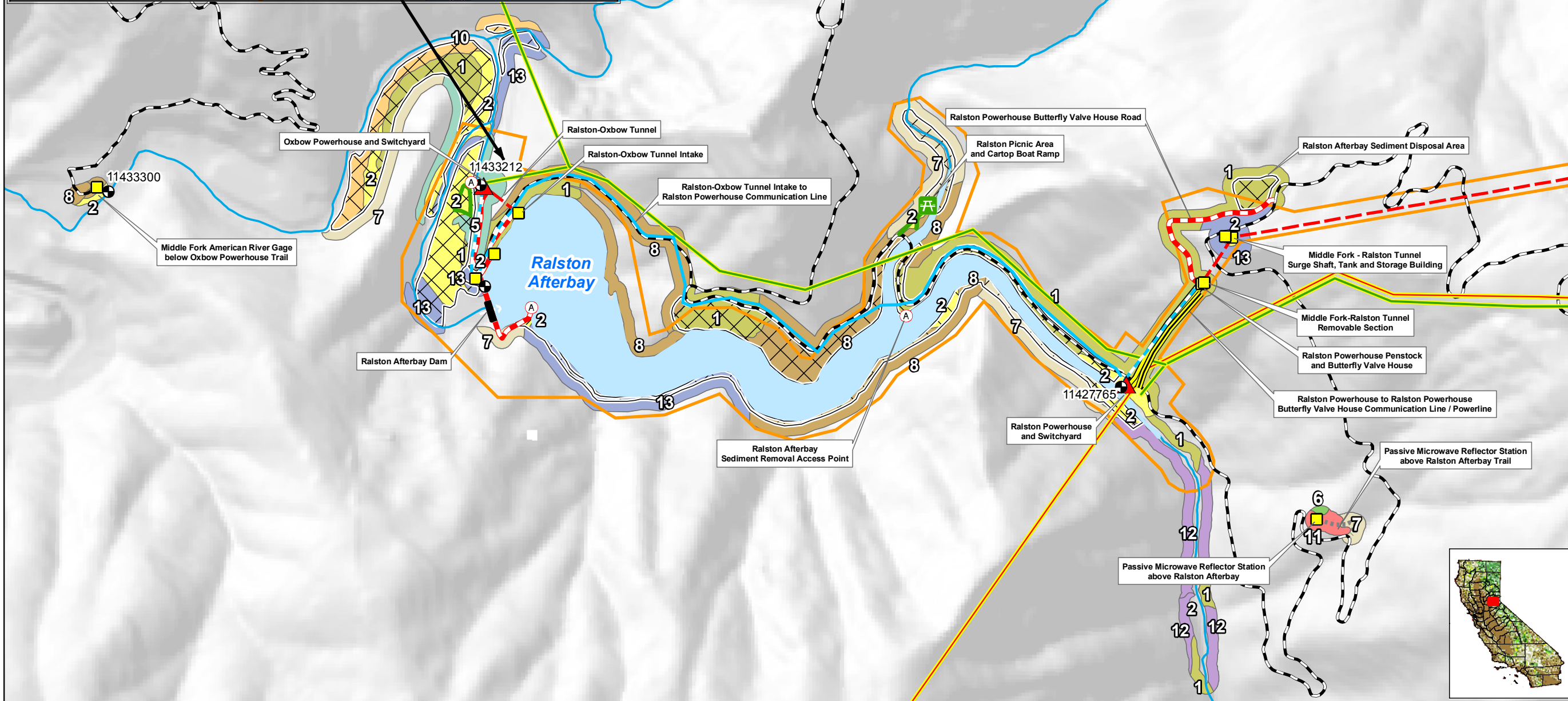
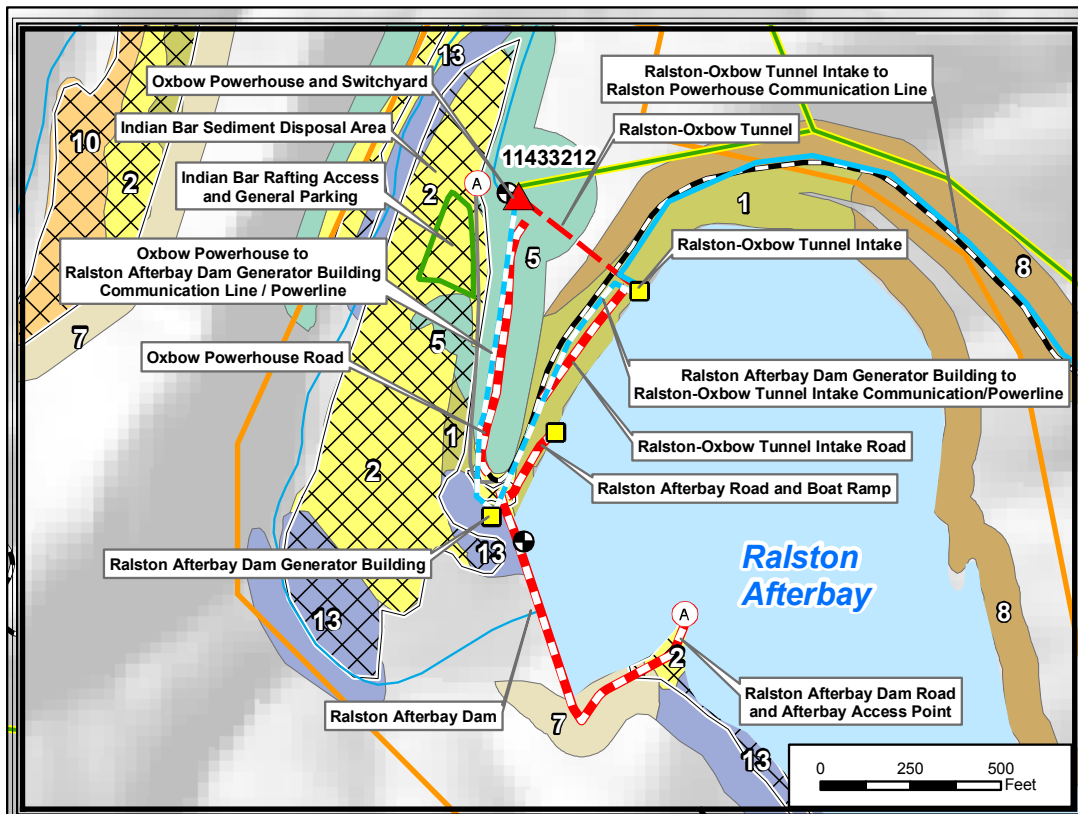
- 230 kV
- 60 kV

Fire Fuel Evaluation IDs

1	7
2	8
3	10
4	11
5	12
6	13

PCWA
Placer County Water Agency
Middle Fork American River Project
Map LAND 2-1
Fuel Evaluation at Project Facilities,
Project Recreation Facilities, and
Dispersed Concentrated Use Areas
Long Canyon Area

0 0.25 0.5 Miles
Projection: Ca. Stateplane, Zone 2
Datum: NAD 83
Date: 03/26/09



PCWA Facilities and Features

- Dam
- Ancillary and Other Facilities
- Powerhouse
- Gage
- Penstock
- Tunnel
- Pipeline
- Access Point
- FERC Boundary

Project Power and Communication Lines:

- Communication
- Power
- Power (underground)
- Communication/Power
- Communication/Power (underground)

Transportation

- Non-Project General Access Road
- Project Road
- Project Trail
- Recreation Access Road
- Recreation Water Supply Facility Access Road or Trail
- Other Road

Project Recreation Facilities

- Picnic Area
- Boat Ramp
- Scenic Viewpoint
- Developed Campground
- Water Supply Line
- Dispersed Concentrated Use Area

Other Facilities

PG & E Transmission Lines:

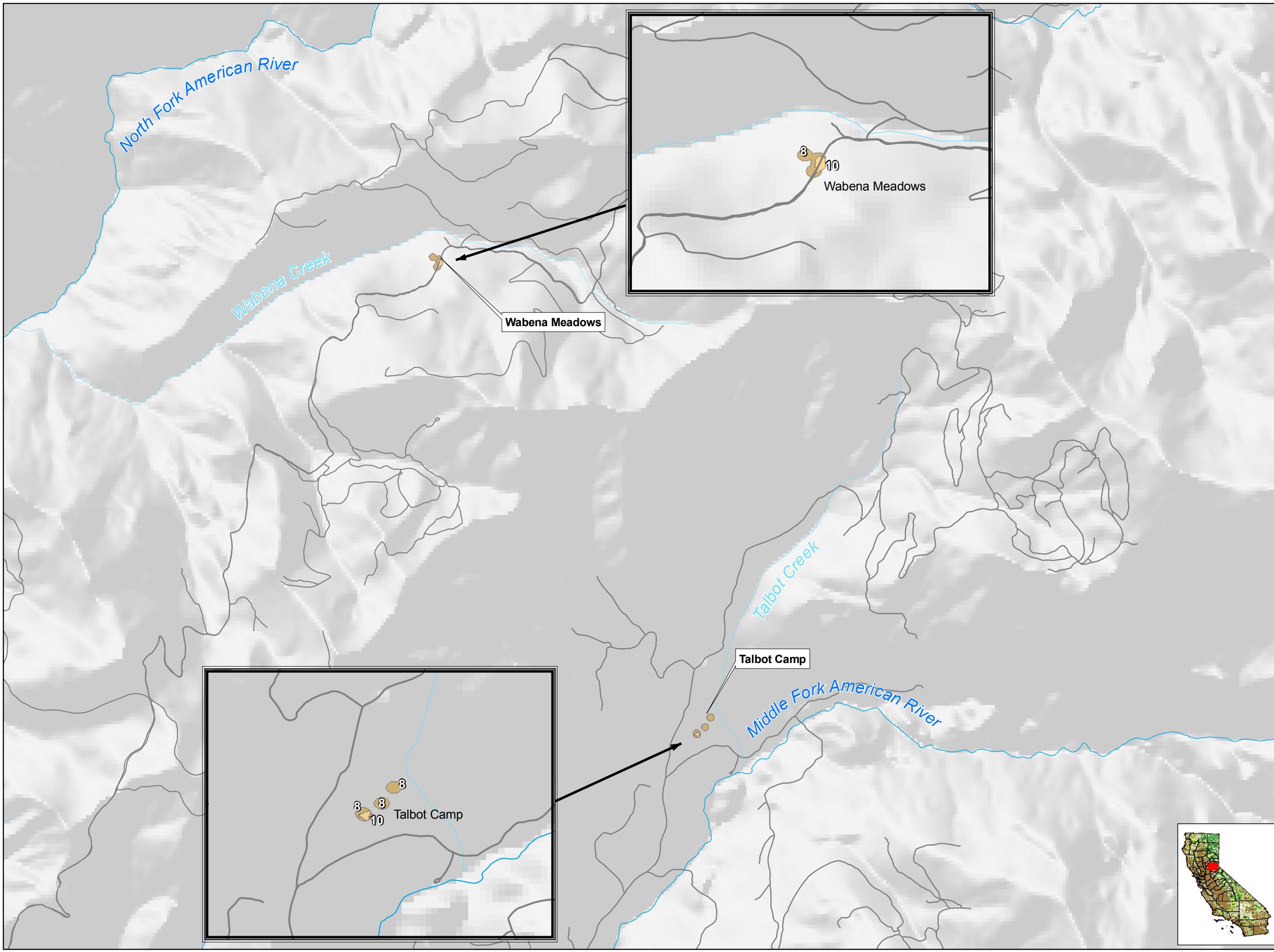
- 230 kV
- 60 kV

Fuel Model IDs

1	7
2	8
3	10
4	11
5	12
6	13

PCWA
Placer County Water Agency
Middle Fork American River Project
Map LAND 2-1
Fuel Evaluation at Project Facilities,
Project Recreation Facilities, and
Dispersed Concentrated Use Areas
Ralston, Oxbow Area

0 500 1,000 Feet
Projection: Ca. Stateplane, Zone 2
Datum: NAD 83
Date: 03/26/09



- PCWA Facilities and Features**
- Dam
 - Ancillary and Other Facilities
 - Powerhouse
 - Gage
 - Penstock
 - Tunnel
 - Pipeline
 - Access Point
 - FERC Boundary
- Project Power and Communication Lines:**
- Communication
 - Power
 - Power (underground)
 - Communication/Power
 - Communication/Power (underground)
- Transportation**
- Non-Project General Access Road
 - Project Road
 - Project Trail
 - Recreation Access Road
 - Recreation Water Supply Facility Access Road or Trail
 - Other Road
- Project Recreation Facilities**
- Picnic Area
 - Boat Ramp
 - Scenic Viewpoint
 - Developed Campground
 - Water Supply Line
 - Dispersed Concentrated Use Area
- Other Facilities**
- PG & E Transmission Lines:
- 230 kV
 - 60 kV
- Fuel Model IDs**
- | | | | |
|--|---|--|----|
| | 1 | | 7 |
| | 2 | | 8 |
| | 3 | | 10 |
| | 4 | | 11 |
| | 5 | | 12 |
| | 6 | | 13 |

PCWA
Placer County Water Agency
Middle Fork American River Project

Map LAND 2-1
Fuel Evaluation at Project Facilities,
Project Recreation Facilities, and
Dispersed Concentrated Use Areas
Northern Snow Courses

0 0.25 0.5
Miles
Projection: Ca. Stateplane, Zone 2
Datum: NAD 83
Date: 03/26/09



- PCWA Facilities and Features**
- Dam
 - Ancillary and Other Facilities
 - Powerhouse
 - Gage
 - Penstock
 - Tunnel
 - Pipeline
 - Access Point
 - FERC Boundary
- Project Power and Communication Lines:**
- Communication
 - Power
 - Power (underground)
 - Communication/Power
 - Communication/Power (underground)
- Transportation**
- Non-Project General Access Road
 - Project Road
 - Project Trail
 - Recreation Access Road
 - Recreation Water Supply Facility Access Road or Trail
 - Other Road
- Project Recreation Facilities**
- Picnic Area
 - Boat Ramp
 - Scenic Viewpoint
 - Developed Campground
 - Water Supply Line
 - Dispersed Concentrated Use Area
- Other Facilities**
- PG & E Transmission Lines:
- 230 kV
 - 60 kV
- Fuel Model IDs**
- | | | | |
|--|---|--|----|
| | 1 | | 7 |
| | 2 | | 8 |
| | 3 | | 10 |
| | 4 | | 11 |
| | 5 | | 12 |
| | 6 | | 13 |

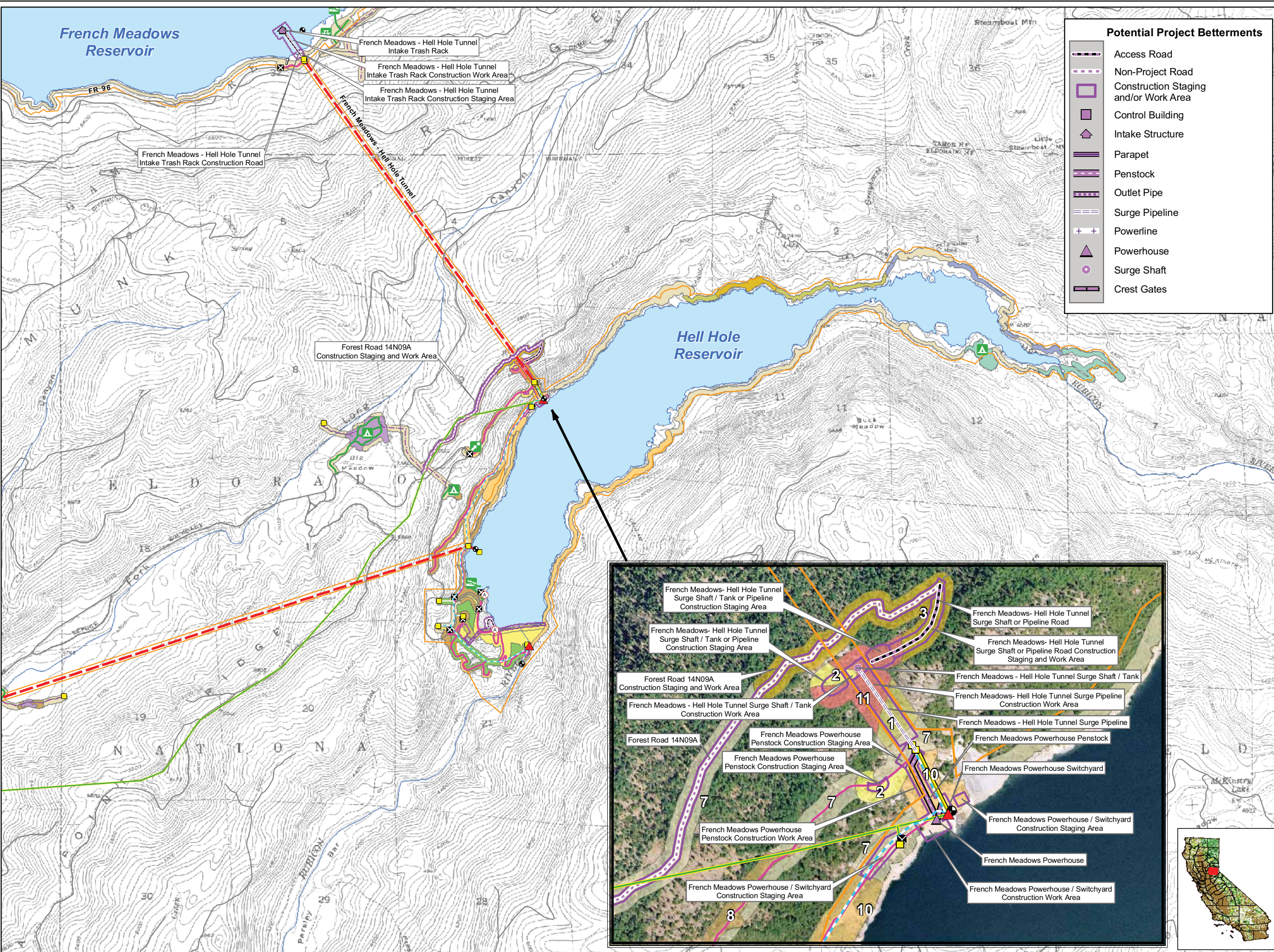
PCWA
Placer County Water Agency
Middle Fork American River Project

Map LAND 2-1
Fuel Evaluation at Project Facilities,
Project Recreation Facilities, and
Dispersed Concentrated Use Areas
Southern Snow Courses

0 0.25 0.5 Miles

Projection: Ca. Stateplane, Zone 2
Datum: NAD 83

Date: 03/26/09



Potential Project Betterments

- Access Road
- Non-Project Road
- Construction Staging and/or Work Area
- Control Building
- Intake Structure
- Parapet
- Penstock
- Outlet Pipe
- Surge Pipeline
- Powerline
- Powerhouse
- Surge Shaft
- Crest Gates

PCWA Facilities and Features

- Dam
- Ancillary and Other Facilities
- Powerhouse
- Gage
- Penstock
- Tunnel
- Gate
- Access Point
- Public Safety Fence
- FERC Boundary

Project Power and Communication Lines:

- Communication
- Power
- Power (underground)
- Communication/Power
- Communication/Power (underground)

Transportation

- Road
- Project Road
- Project Trail
- Recreation Access Road

Project Recreation Facilities

- Picnic Area
- Boat Ramp
- Scenic Viewpoint
- Developed Campground
- Water Supply Line

Other Facilities

PG & E Transmission Lines:

- 230 kV
- 60 kV

Fuel Model IDs

	1		7
	2		8
	3		10
	4		11
	5		12
	6		13



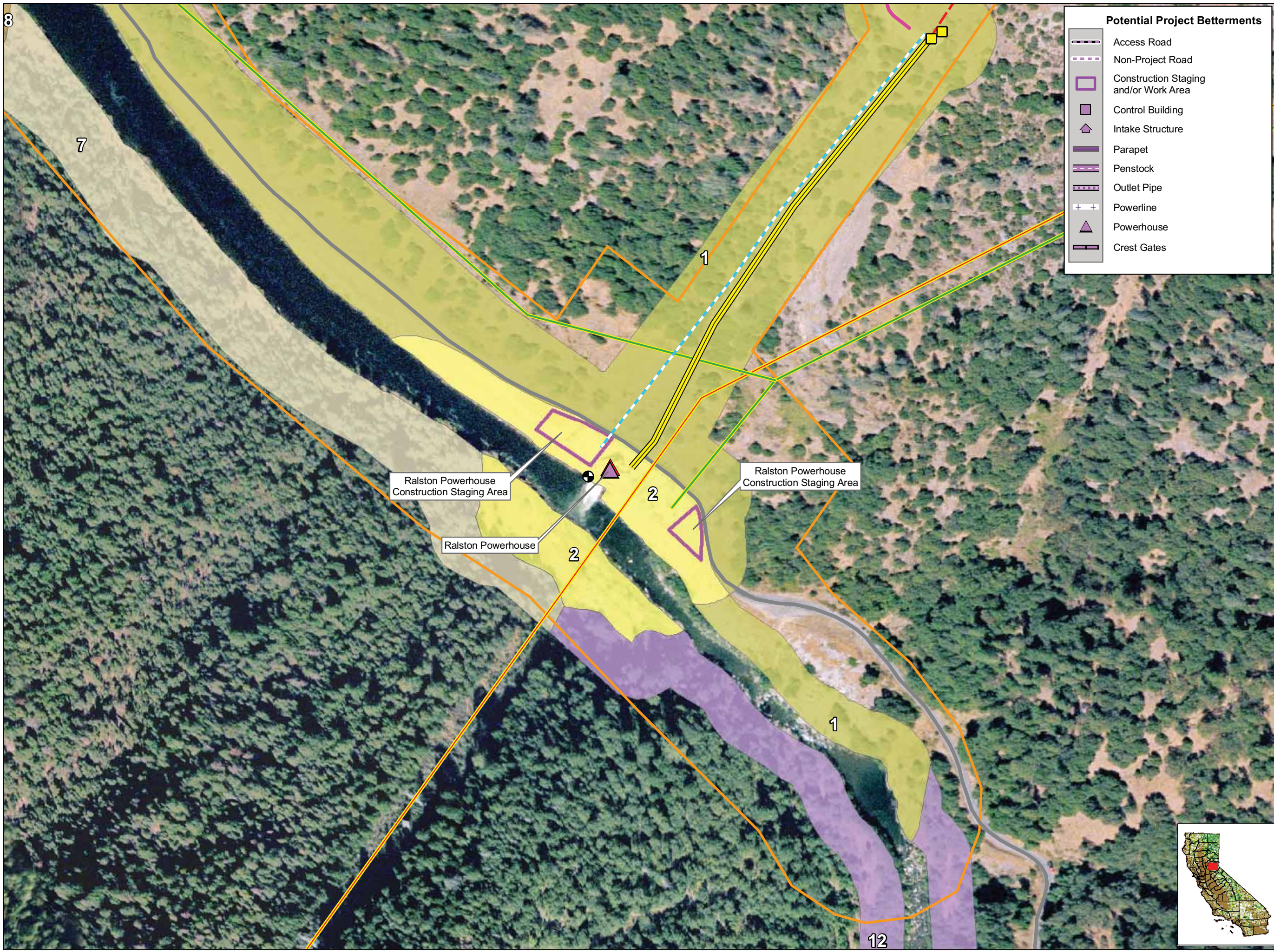
NOTE: Boundary of the potential betterment-related change in reservoir inundation area to be determined

Placer County Water Agency
Middle Fork American River Project

Map LAND 2-2
Fuel Evaluation at Potential Project Betterments
French Meadows Powerhouse
Capacity Upgrade Betterment

Projection: Ca. Stateplane, Zone 2
Datum: NAD 83

Date: 3/26/09



Potential Project Betterments

- Access Road
- Non-Project Road
- Construction Staging and/or Work Area
- Control Building
- Intake Structure
- Parapet
- Penstock
- Outlet Pipe
- Powerline
- Powerhouse
- Crest Gates

PCWA Facilities and Features

- Dam
- Ancillary and Other Facilities
- Powerhouse
- Gage
- Penstock
- Tunnel
- Gate
- Access Point
- Public Safety Fence
- FERC Boundary

Project Power and Communication Lines:

- Communication
- Power
- Power (underground)
- Communication/Power
- Communication/Power (underground)

Transportation

- Road
- Project Road
- Project Trail
- Recreation Access Road

Project Recreation Facilities

- Picnic Area
- Boat Ramp
- Scenic Viewpoint
- Developed Campground
- Water Supply Line

Other Facilities

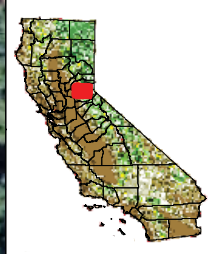
PG & E Transmission Lines:


- 230 kV
- 60 kV

Fuel Model IDs

1	7
2	8
3	10
4	11
5	12
6	13

NOTE: Boundary of the potential betterment-related change in reservoir inundation area to be determined






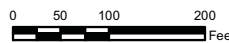
Placer County Water Agency
Middle Fork American River Project

Map LAND 2-2

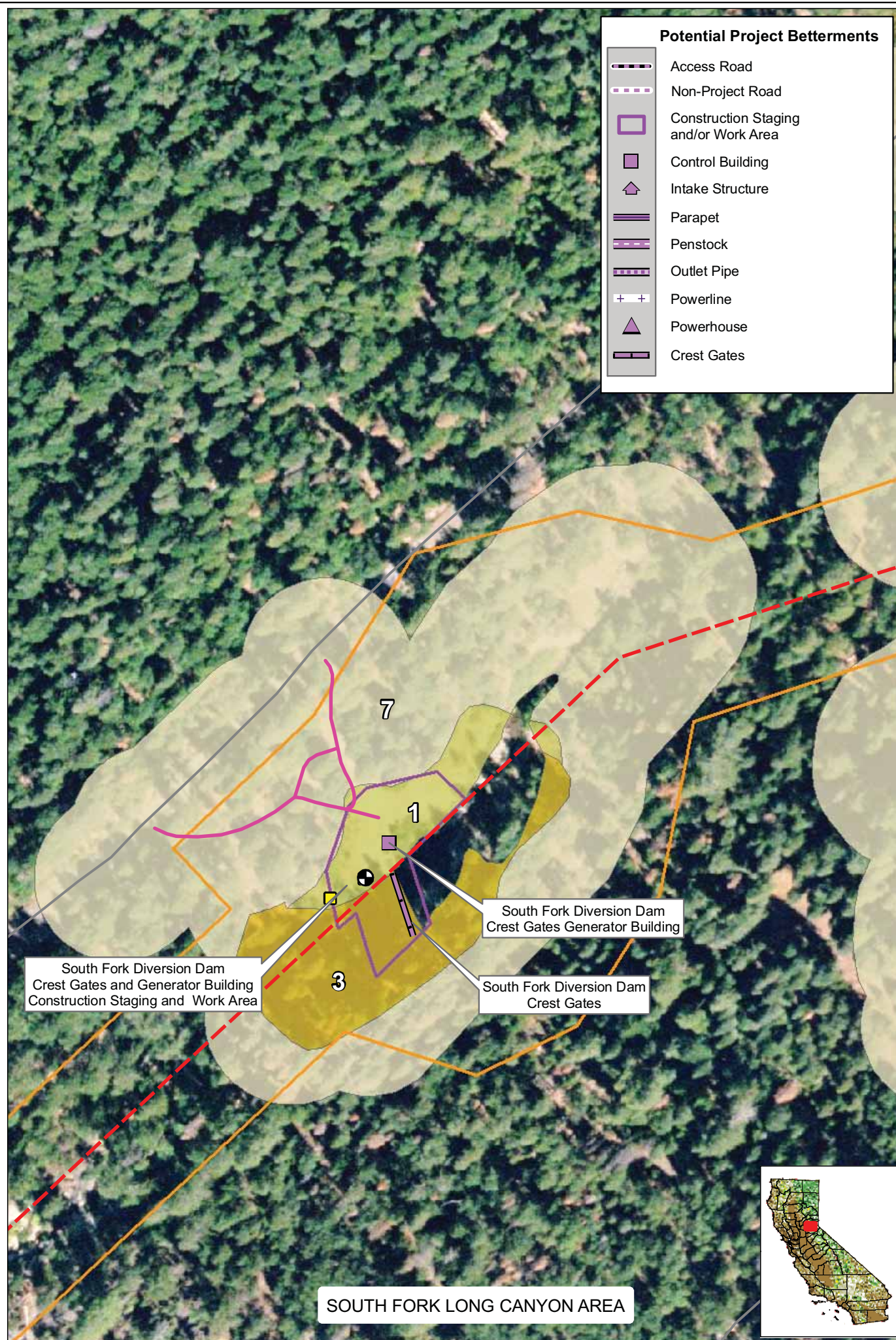
**Fuel Evaluation at Potential Project Betterments
Ralston Powerhouse
Capacity Upgrade Betterment**



Date: 3/26/09



Projection: Ca. Stateplane, Zone 2
Datum: NAD 83



Potential Project Betterments

- Access Road
- Non-Project Road
- Construction Staging and/or Work Area
- Control Building
- Intake Structure
- Parapet
- Penstock
- Outlet Pipe
- Powerline
- Powerhouse
- Crest Gates

PCWA Facilities and Features

- Dam
- Ancillary and Other Facilities
- Powerhouse
- Gage
- Penstock
- Tunnel
- Gate
- Access Point
- Public Safety Fence
- FERC Boundary

Project Power and Communication Lines:

- Communication
- Power
- Power (underground)
- Communication/Power
- Communication/Power (underground)

Transportation

- Road
- Project Road
- Project Trail
- Recreation Access Road

Project Recreation Facilities

- Picnic Area
- Boat Ramp
- Scenic Viewpoint
- Developed Campground
- Water Supply Line

Other Facilities

PG & E Transmission Lines:

- 230 kV
- 60 kV

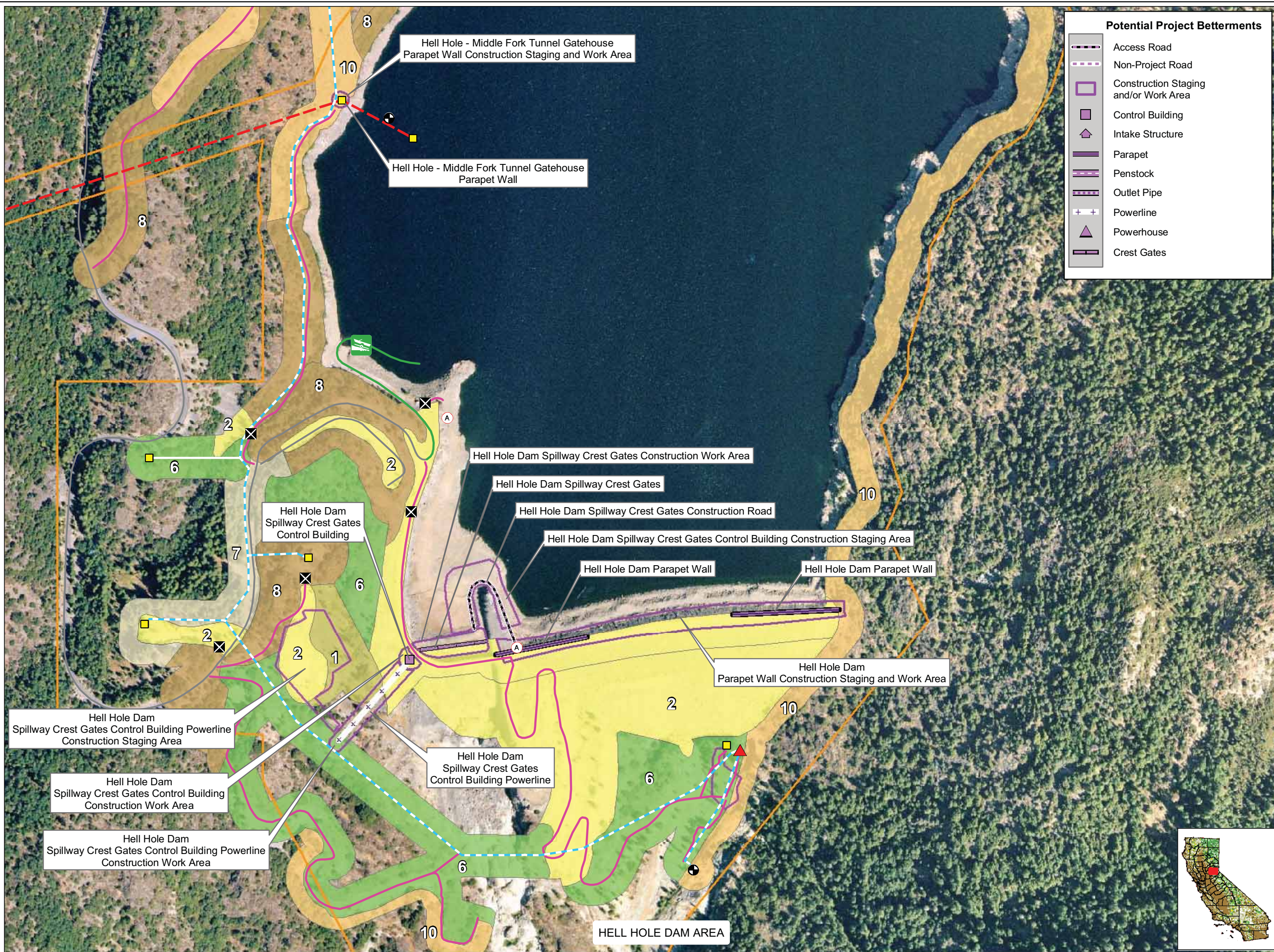
Fuel Model IDs

1	7
2	8
3	10
4	11
5	12
6	13

NOTE: Boundary of the potential betterment-related change in reservoir inundation area to be determined

PCWA
 Placer County Water Agency
 Middle Fork American River Project
Map LAND 2-2
Fuel Evaluation at Potential Project Betterments
Hell Hole Reservoir
Seasonal Storage Increase

0 50 100 Feet
 Projection: Ca. Stateplane, Zone 2
 Datum: NAD 83
 Date: 3/26/09



Potential Project Betterments

- Access Road
- Non-Project Road
- Construction Staging and/or Work Area
- Control Building
- Intake Structure
- Parapet
- Penstock
- Outlet Pipe
- Powerline
- Powerhouse
- Crest Gates

PCWA Facilities and Features

- Dam
- Ancillary and Other Facilities
- Powerhouse
- Gage
- Penstock
- Tunnel
- Gate
- Access Point
- Public Safety Fence
- FERC Boundary

Project Power and Communication Lines:

- Communication
- Power
- Power (underground)
- Communication/Power
- Communication/Power (underground)

Transportation

- Road
- Project Road
- Project Trail
- Recreation Access Road

Project Recreation Facilities

- Picnic Area
- Boat Ramp
- Scenic Viewpoint
- Developed Campground
- Water Supply Line

Other Facilities

PG & E Transmission Lines:

- 230 kV
- 60 kV

Fuel Model IDs

1	7
2	8
3	10
4	11
5	12
6	13

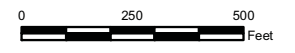
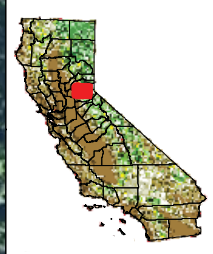
NOTE: Boundary of the potential betterment-related change in reservoir inundation area to be determined



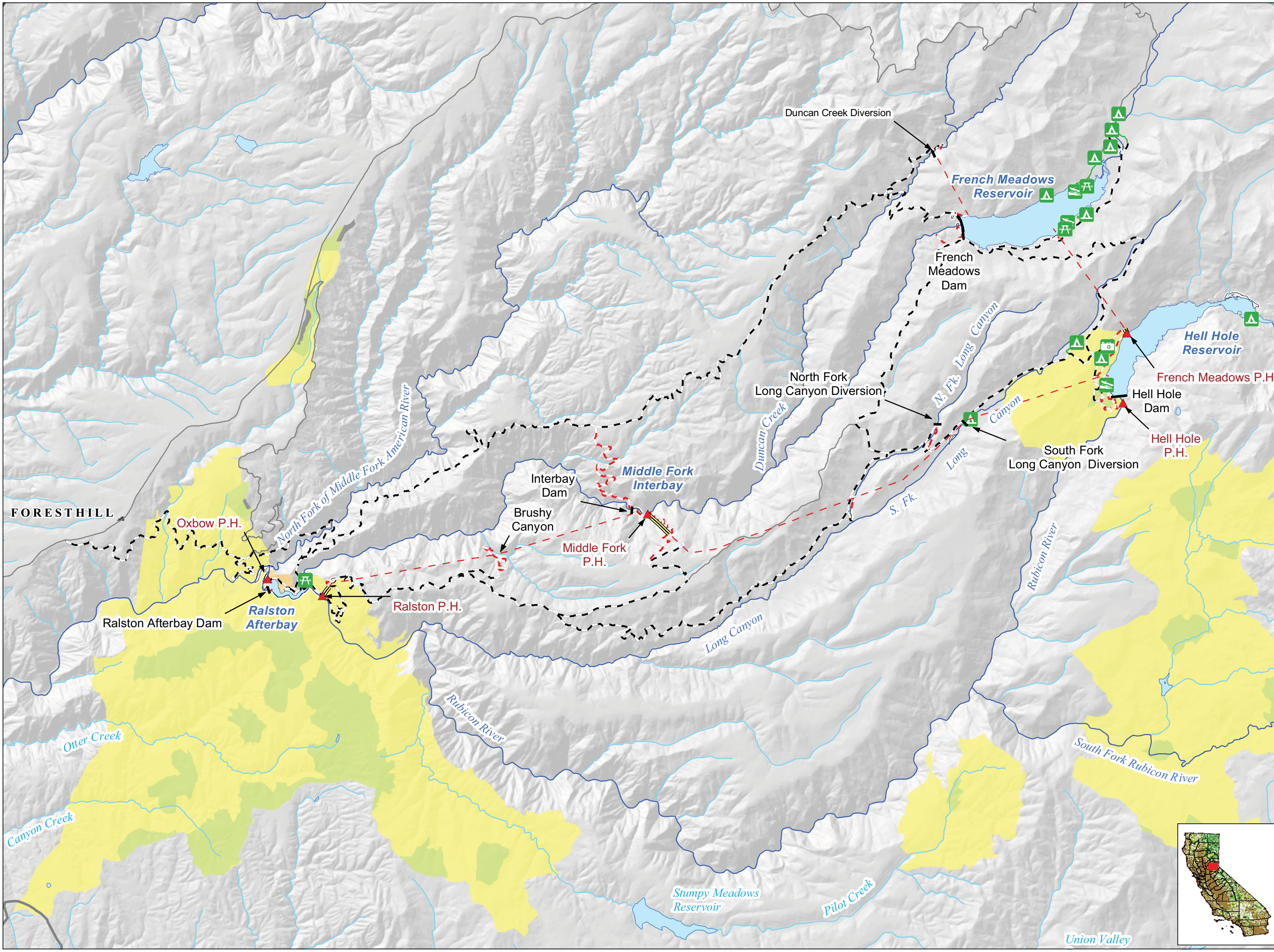
Placer County Water Agency
Middle Fork American River Project

Map LAND 2-2

**Fuel Evaluation at Potential Project Betterments
Hell Hole Reservoir
Seasonal Storage Increase**



Projection: Ca. Stateplane, Zone 2
Datum: NAD 83



- Project Facilities**
- ▲ Powerhouse
 - Dam
 - - - Tunnel
 - ══ Penstock
- Project Recreation Facilities**
- 🚤 Boat Ramp
 - ▲ Developed Campground
 - 🍷 Picnic Area
 - 👁 Scenic Viewpoint
 - ▨ Dispersed Concentrated Use Area
- Transportation**
- - - Project Road
 - - - Non-Project General Access Road
 - Major Road
 - Minor Road
- Hydrography**
- Watercourse
 - Water Body
- Threat / Defense Zones**
- Defense Zone
 - Threat Zone, with Defense Zone
 - Threat Zone, without Defense Zone
 - Urban Core, <1 house/5 acres
 - Urban Core, >1 house/5 acres

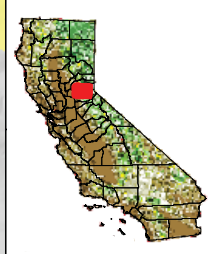


Placer County Water Agency
Middle Fork American River Project

Map LAND 2-3

Existing Wildland/Urban Intermix Zones
in the Vicinity of the Middle Fork Project

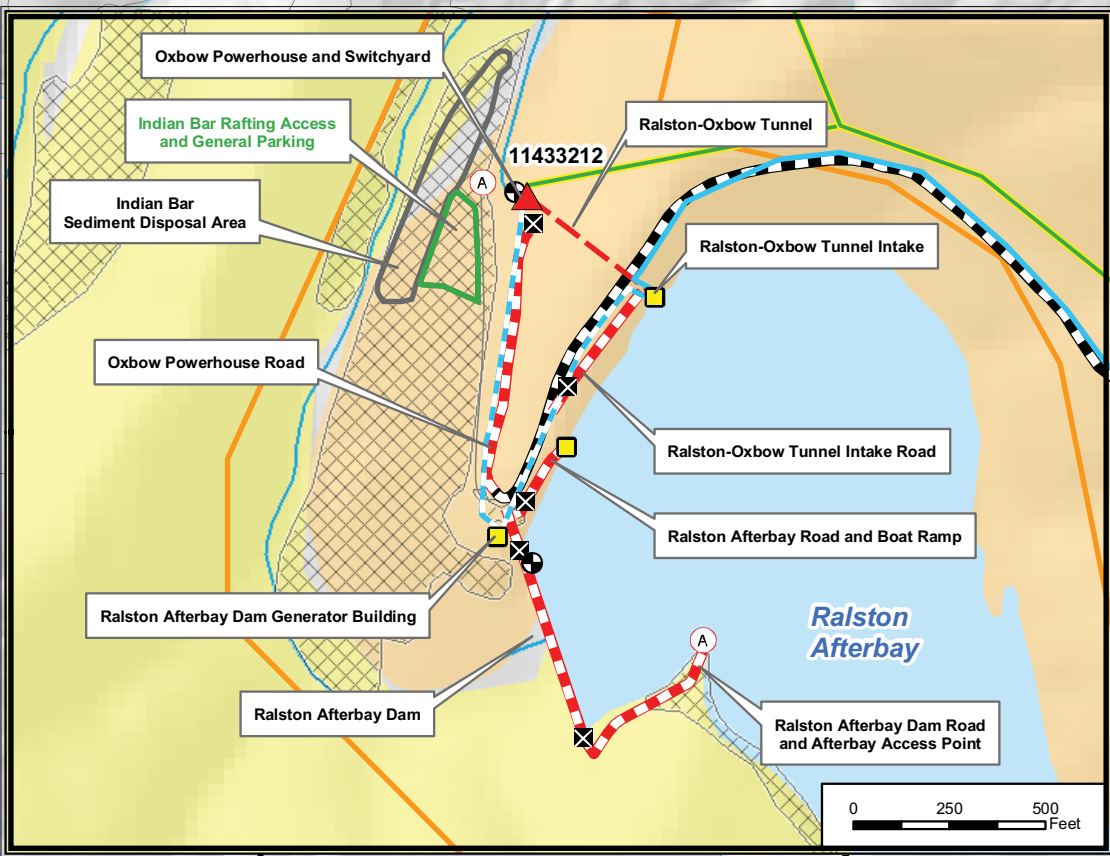
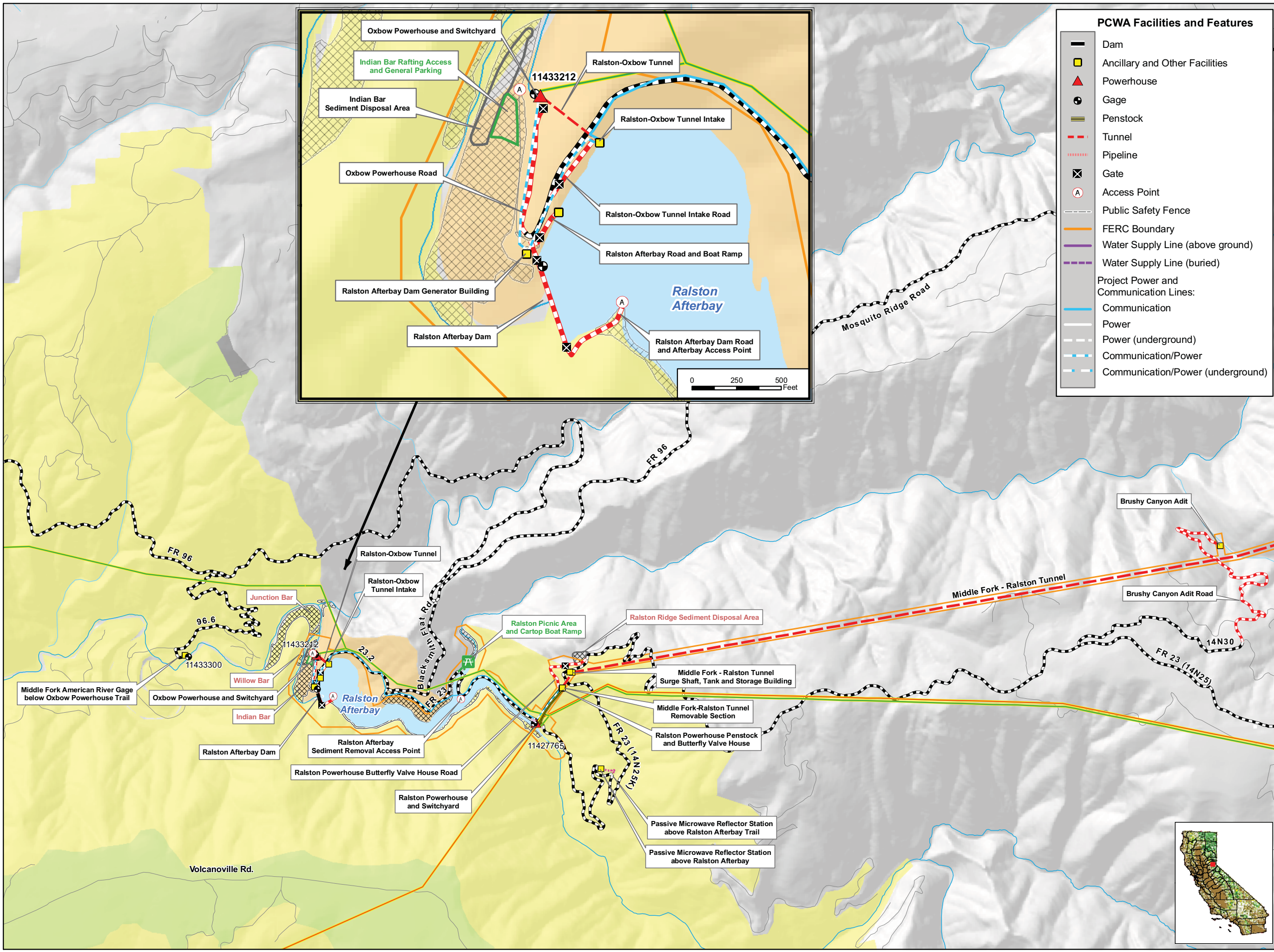
Overview Map



0 0.5 1 2 Miles

Projection: CA State Plane, Zone 2
Datum: NAD 83

Date: 3/27/09



PCWA Facilities and Features

- Dam
- Ancillary and Other Facilities
- Powerhouse
- Gage
- Penstock
- Tunnel
- Pipeline
- Gate
- Access Point
- Public Safety Fence
- FERC Boundary
- Water Supply Line (above ground)
- Water Supply Line (buried)
- Project Power and Communication Lines:**
 - Communication
 - Power
 - Power (underground)
 - Communication/Power
 - Communication/Power (underground)

Transportation

- Non-Project General Access Road
- Project Road
- Project Trail
- Recreation Access Road
- Recreation Water Supply Facility Access Road or Trail
- Temporary Road Associated with Potential Project Betterments
- Permanent Road Associated with Potential Project Betterments
- Other Road

Project Recreation Facilities

- Picnic Area
- Boat Ramp
- Scenic Viewpoint
- Developed Campground

Other Facilities

PG & E Transmission Lines:

- 230 kV
- 60 kV

Potential Betterments Features*

- Construction Staging or Work Areas

* The proposed Project betterments are currently under review. The final configuration will be provided to the stakeholders and included in the Final Technical Study Plans

Facilities and Dispersed Recreation Areas Identified by Stakeholders

- Recreation Access OHV Road
- Recreation Access Trail
- Trailhead
- Dispersed Concentrated Use Area
- Parking Area

Threat / Defense Zones

- Defense Zone
- Threat Zone, with Defense Zone
- Threat Zone, without Defense Zone
- Urban Core, <1 house/5 acres
- Urban Core, >1 house/5 acres

Placer County Water Agency
Middle Fork American River Project

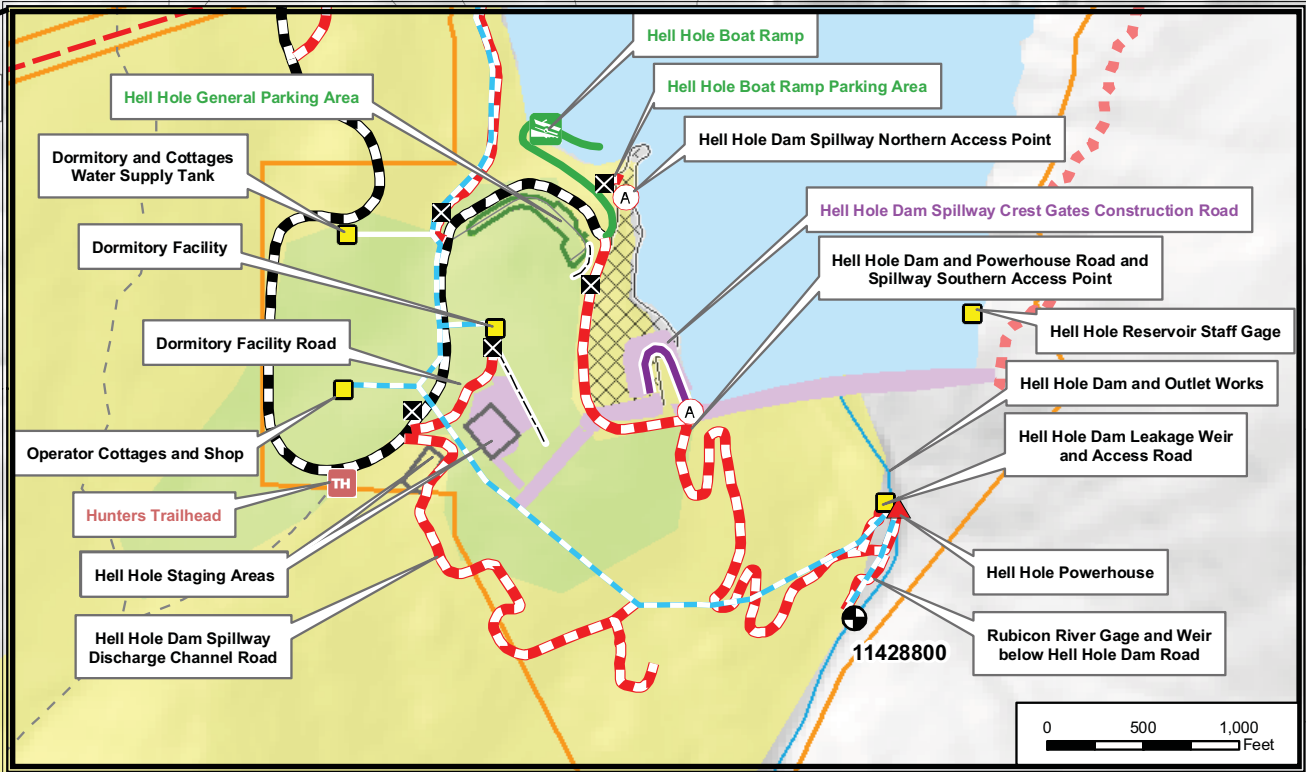
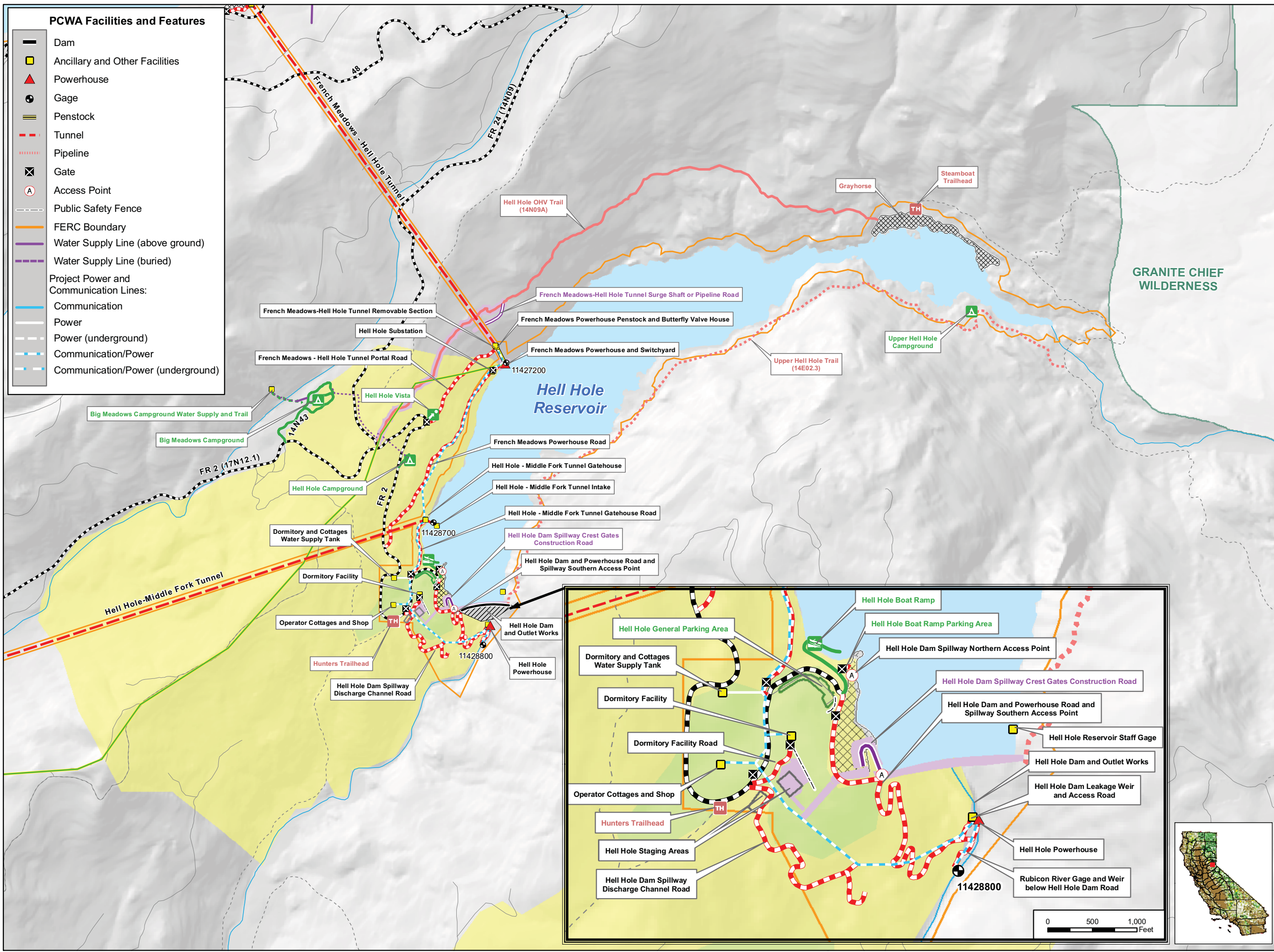
Map LAND 2-3

Existing Wildland/Urban Intermix Zones in the Vicinity of the Middle Fork Project

Sheet 1 of 2
Ralston, Oxbow Area

Projection: Ca. Stateplane, Zone 2
Datum: NAD 83

Date: 3/27/09



- ### PCWA Facilities and Features
- Dam
 - Ancillary and Other Facilities
 - Powerhouse
 - Gage
 - Penstock
 - Tunnel
 - Pipeline
 - Gate
 - Access Point
 - Public Safety Fence
 - FERC Boundary
 - Water Supply Line (above ground)
 - Water Supply Line (buried)
 - Project Power and Communication Lines:**
 - Communication
 - Power
 - Power (underground)
 - Communication/Power
 - Communication/Power (underground)

- ### Transportation
- Non-Project General Access Road
 - Project Road
 - Project Trail
 - Recreation Access Road
 - Recreation Water Supply Facility Access Road or Trail
 - Temporary Road Associated with Potential Project Betterments
 - Permanent Road Associated with Potential Project Betterments
 - Other Road

- ### Project Recreation Facilities
- Picnic Area
 - Boat Ramp
 - Scenic Viewpoint
 - Developed Campground

- ### Other Facilities
- PG & E Transmission Lines:
- 230 kV
 - 60 kV

- ### Potential Betterments Features*
- Construction Staging or Work Areas
- * The proposed Project betterments are currently under review. The final configuration will be provided to the stakeholders and included in the Final Technical Study Plans

- ### Facilities and Dispersed Recreation Areas Identified by Stakeholders
- Recreation Access OHV Road
 - Recreation Access Trail
 - Trailhead
 - Dispersed Concentrated Use Area
 - Parking Area

- ### Threat / Defense Zones
- Defense Zone
 - Threat Zone, with Defense Zone
 - Threat Zone, without Defense Zone
 - Urban Core, <1 house/5 acres
 - Urban Core, >1 house/5 acres

Placer County Water Agency
Middle Fork American River Project

Map LAND 2-3

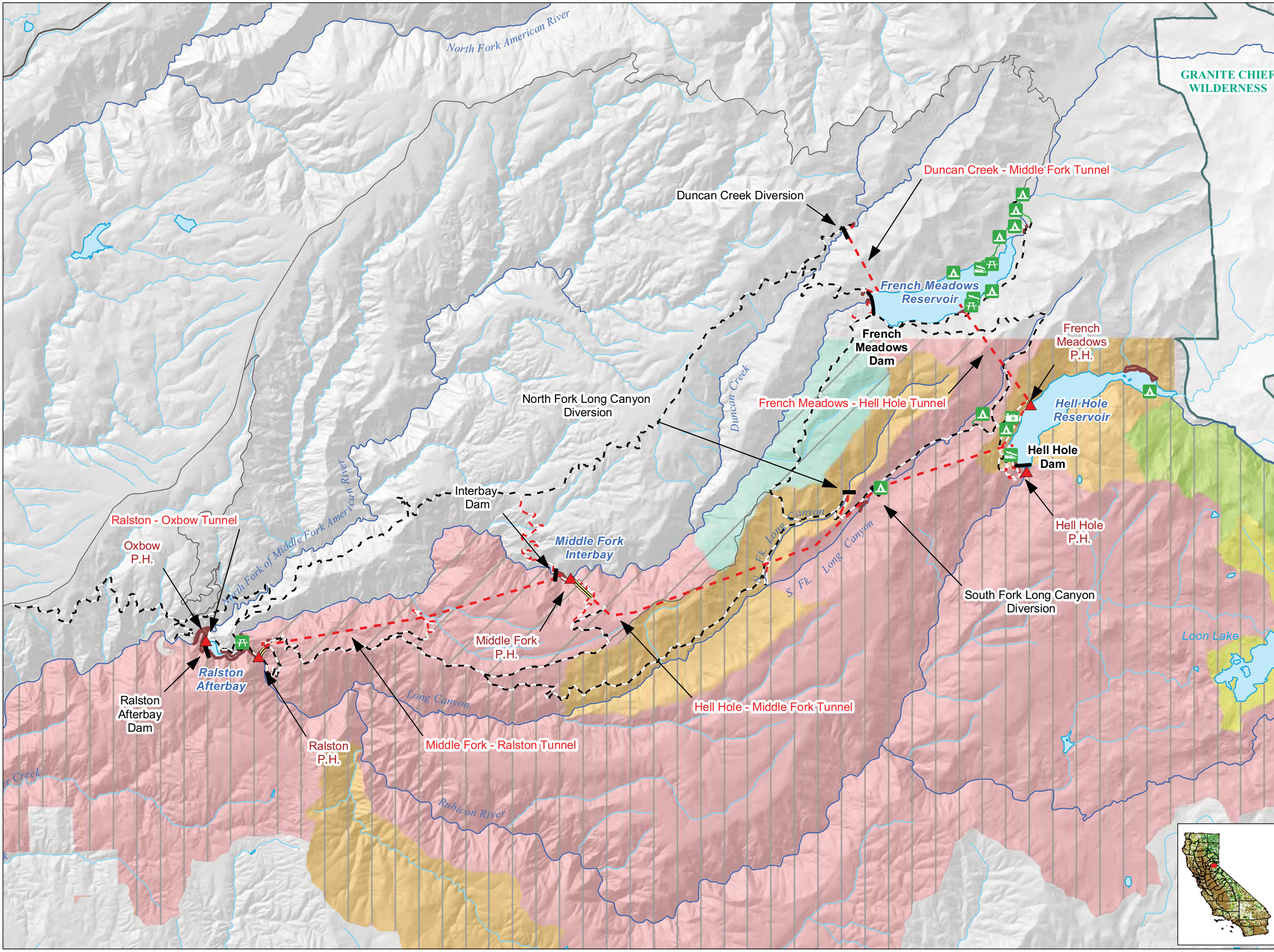
Existing Wildland/Urban Intermix Zones in the Vicinity of the Middle Fork Project

Sheet 2 of 2
Hell Hole Area

Date: 3/27/09

0 0.25 0.5 Miles

Projection: Ca. Stateplane, Zone 2
Datum: NAD 83



- Project Facilities**
- Powerhouse
 - Dam
 - Tunnel
 - Penstock

- Project Recreation Facilities**
- Boat Ramp
 - Developed Campground
 - Picnic Area
 - Scenic Viewpoint
 - Dispersed Concentrated Use Area


- Transportation**
- Project Road
 - Non-Project General Access Road
 - Major Road
 - Minor Road

- Hydrography**
- Watercourse
 - Water Body

- Fire Hazard Rating***
- Low
 - Moderate
 - High
 - Very High
 - Extreme

- Fire Risk Rating***
- Moderate
 - High
 - Very High


* Eldorado Natl. Forest data only



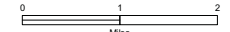
Placer County Water Agency
Middle Fork American River Project

Map LAND 2-4

**Fire Hazard and Fire Risk Ratings
in the Vicinity of the Middle Fork Project**



Date: 3/27/09



Projection: CA State Plane, Zone 2
Datum: NAD 83

